

# Communication Software DF2 Wedge

Download free at  
[www.chatillon.com](http://www.chatillon.com)

- » **Easy to use**  
auto-detect function for Bluetooth and serial connection (USB and RS232)
- » **Seamless integration**  
automatic Microsoft® Excel® file generation
- » **Language choice**  
menus and text can be switched between English, German, French and Spanish
- » **Quality control**  
time and date stamped data
- » **Flexible output**  
electronic file or printed reports of your measurement data



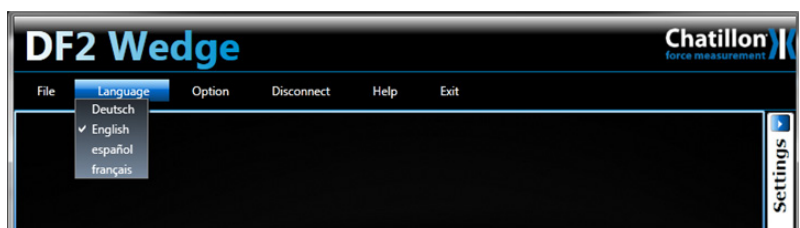
## Get the most from your digital force gauge – Easy, fast and flexible software

DF2 Wedge communication software supports serial data communications between your Chatillon Digital Force and Torque Gauges Series and your Microsoft Windows based personal computer.

You can easily choose the exact data you want to transfer as well as how you want it to be transferred. And once your data is in Microsoft Excel, it can be edited, saved for documentation purposes, analyzed and printed.

The software supports the following operating systems: Windows® XP, Windows7 and Windows8.

DF2 Wedge allows you to choose between four languages; English, German, French and Spanish.



ISO 9001 Manufacturer

Specification Sheet  
SS-DF2 Wedge

The Chatillon Digital Force Gauges provide the following communication interfaces with DF2 Wedge:

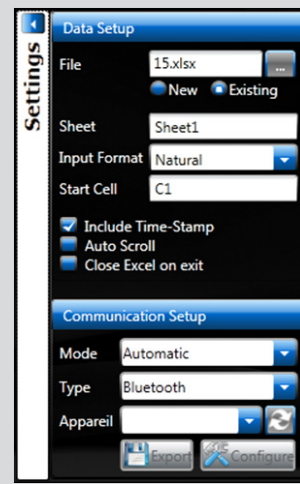
	RS232	USB with auto-detect	Bluetooth with auto-detect
DFS II	X	X	X
DFS II-R	X	X	X
DFS II-R-ND	X	X	X
DFE II	X	X	
DFS	X		
DFS-R	X		
DFS-R-ND	X		
E-DFE	X		

## Ordering

NC000850-1	Hirose 12 connecting cable	Use with DF Series force gauges to connect to an RS232 input, 9-pin 9 ft (3 m)
NC000850-2	Hirose 12 connecting cable	Use with DF Series force gauges to connect to an RS232 input, 9-pin 20 ft (7 m)
SPK-FMG-USB		Micro USB interface DF II Series to PC

## Minimum system requirements

- Operating system: Windows XP (with SP 3) and Windows 7 and Windows 8
- Framework: MS.Net Framework 4.0
- Processor: Pentium and higher
- Serial port : 1 serial/USB port
- Bluetooth connectivity: if required



### AMETEK Test & Calibration Instruments

A business unit of AMETEK Measurement & Calibration Technologies offering the following industry leading brands for test and calibration instrumentation.

#### Chatillon Force Measurement

Chatillon has been a hallmark in the industry since 1835. The hand held gauges and motorized testers have earned their reputation for quality, reliability and accuracy and they represent the de facto standard for force measurement.

#### Lloyd Instruments

##### Materials Testing Solutions

Materials testing machines and software from Lloyd Instruments guarantee the highest level of performance and capability for production testing, quality control, laboratory testing, research and education to provide expert materials testing solutions.

#### Davenport Polymer Test Equipment

Allows critical polymer parameters to be determined, including melt flow index and melt flow rate, intrinsic viscosity (IV) measurement of moisture-sensitive PET polymers and polymer density measurement.

#### Texture Analysers

The comprehensive program provides the platform to perform rapid, general food testing and detailed texture analysis on a diverse range of foods.

#### Newage Testing Instruments

Newage offers a comprehensive range of hardness testers, durometers, optical systems and software for measurement, data acquisition and analysis.

#### JOFRA Calibration Instruments

The inventor of the portable high precision dry-block temperature calibrators. The calibration instruments program also covers precision thermometers and temperature baths, temperature sensors hand held instruments for pressure calibration and process signal calibrators for easy control loop calibration, measurements and simulation.

#### M&G Pressure Testers & Pumps

Pneumatic floating-ball or hydraulic piston dead weight testers with accuracies to 0.015% of reading.

# AMETEK®

TEST & CALIBRATION INSTRUMENTS

**UK**  
Lloyd Instruments Ltd  
Tel +44 (0)1243 833 370  
uk-far.general@ametek.co.uk

**France**  
AMETEK S.A.S.  
Tel +33 (0)1 30 68 89 40  
general.lloyd-instruments@ametek.fr

**Germany**  
AMETEK GmbH  
Tel +49 (0)2159 9136 510  
info.mct-de@ametek.de

**Denmark**  
AMETEK Denmark A/S  
Tel +45 4816 8000  
ametekdk@ametek.com

**USA**  
AMETEK Measurement & Calibration Technologies  
Tel +1 (727) 536 7831  
chatillon.fl-lar@ametek.com

**India**  
AMETEK Instruments India Pvt Ltd.  
Tel +91 22 2836 4750  
ametekdk@ametek.com

**Singapore**  
AMETEK Singapore Pte Ltd  
Tel +65 6484 2388  
ametekdk@ametek.com

**China**  
AMETEK Inc. - Shanghai  
Tel +86 21 5868 5111  
AMETEK Inc. - Beijing  
Tel +86 10 8526 2111

AMETEK Inc. - Guangzhou  
Tel +86 20 8363 4768  
lloyd@ametek.com.cn

[www.chatillon.com](http://www.chatillon.com)