



MSE100 Series Mechanical Strength Evaluator

Simple-to-use, ergonomically designed mechanical instrument
ideal for muscle strength evaluations and job task analysis

Features and Specifications



Operating Modes

- Normal
- Peak Strength

Peak Load Switch

The MSE100 features a 2.25 inch dial and a peak hold button for capture of the peak readings and an easy return to zero.

Push & Pull Testing

The MSE100 is an excellent, portable solution for physical tensile (Pull) or compression (Push) testing.

Tare Ring

The concentric dial measures clockwise only and rotates 360 degrees for taring.

Certificate and Warranty

The gauge is delivered with a Certificate of Calibration with NIST Data and 2 Year Warranty.



Optional FCEK kit with accessories

Specifications	
Accuracy	+0.5% of Full Scale
Overload Capacity	110% of Rated Capacity
Max. Overload	150% of Rated Capacity
Tare Capacity	10% of Rated Capacity
Dial Resolution	0.5% of Full Scale
Deflection (Full Scale)	10mm / 394 in
Operating Temp.	5 to 45°C / 40 to 110°F
Weight	0.68 kg / 1.5 lbs
Shipping Weight	3.80 kg / 8.4 lbs

The MSE100 Series mechanical dynamometer is ideal for ergonomic evaluations, job task analysis, functional capacity, and muscle strength analysis.

It features a large, 2.25-inch dial for easy readability. The concentric dial measures clockwise only. A peak hold button captures peak readings and can quickly be returned to zero. It has an accuracy of +0.5% of full scale, and a mechanical overload feature to protect the dynamometer from damage.

The durable, plastic housing fits naturally in the hand for a comfortable and firm grip even at maximum loads. The dynamometer may be mounted to a test stand for even greater control and consistent results in repetitive testing applications. Dial rotates 360 degrees for taring.

The MSE100 is an excellent, portable solution for physical tensile (Pull) or compression (Push) testing.

Ordering

Accessories				
Part No.	Description	DMG	Capacity	Thread
NC002753	Carrying Case	■		
SPK-FMG-HANDLE	Handle Assembly	■		
13406	Handles, 4-inch length	■		
SPK-FMG-012A	Hook, Stationary	●	50 lbf/225N	#10-32F
SPK-FMG-012B	Hook, Stationary	●	100 lbf/500N	#10-32F
SPK-FMG-011A	Flat	●	100 lbf/500N	#10-32F
ML3867	Hook, Swivel	●	20 lbf/112N	#10-32F
ML3850	Hook, Swivel	●	100 lbf/500N	#10-32F
SPK-FMG-008A	Chisel Point	●	100 lbf/500N	#10-32F
SPK-FMG-009A	Point	●	100 lbf/500N	#10-32F
SPK-FMG-010A	Notch	●	100 lbf/500N	#10-32F
P-10020	Adapter, #10-32 to 5/16-18	●		#10-32F
Functional Capacity Evaluation Kit & Accessories				
Nc002845	Soft Case	●		
NC002500	Hook, Clasp	●	250 lbf	#10-32F
SPK-FMG-143	Adapter, Flat Disc 1/2"	●	250 lbf	#10-32F
SPK-FMG-142	Adapter, Curve Fixture	●	250 lbf	#10-32F
NC000725	Adapter, V-Notch 1"	●	500 lbf/2.5kN	#10-32F
SPK-FMG-141	Pistol Grip Assembly	●		
NC002844	Grasping Cable	●	500 lbf/2.5kN	
SPK-FMG-013C	Extension Rod, 6 in / 152mm	●		#10-32F
NC000857	Knurl Nut, 5/16-18	●		#10-32F

Standard Accessory = ■ Optional Accessory = ●

AMETEK Test & Calibration Instruments

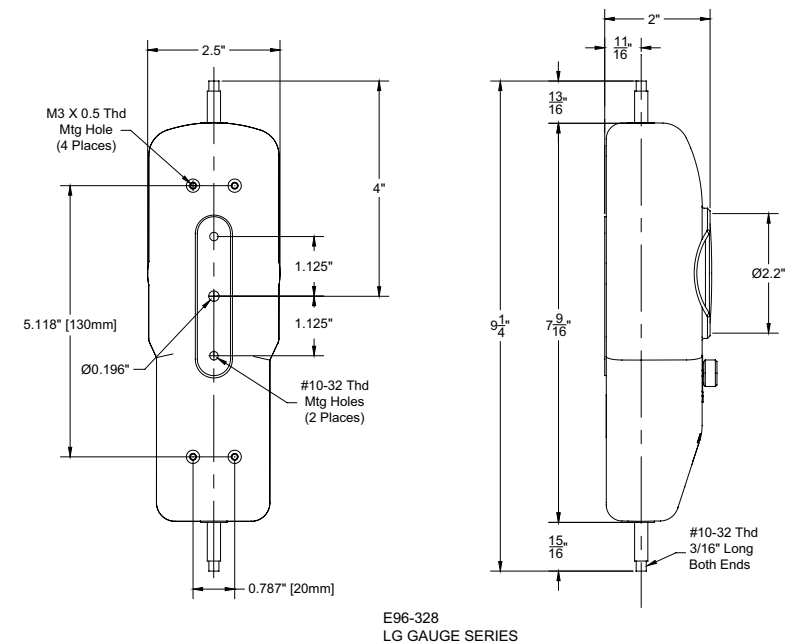
8600 Somerset Drive • Largo, FL 33773 • USA • Tel +1-727-536-7831 • test@ametek.com

© 2015 AMETEK Inc.

Pub code: SS-MSE100 Issue: 1503

Information in this document is subject to change without notice. No part of this document may be reproduced or modified in any form or by any means, electronic or mechanical, without express written permission from AMETEK Test & Calibration Instruments.

Standard Models				
Model	Capacity	Accuracy	Certificate	Thread
MSE100-M	100 x 0.5 lbf	±0,5%	NIST Data	#10-32M



Chatillon
force measurement

www.ametektest.com

AMETEK
TEST & CALIBRATION INSTRUMENTS