

How-to Upgrade LD Series Firmware

Lloyd Instruments and AMETEK STC supply regular improvements and enhancements to our product lines based on customer feedback and product development teams testing and development. Customers are strongly encouraged to keep their products up to date with the latest firmware to ensure the best performance and enable new applications. Please follow the instructions below to upgrade the Lloyd Instruments LD Series to the newest firmware.

Pre-requisites

Upgrading the LD Series firmware requires a Microsoft Windows computer and two downloads from <https://www.ametektest.com>. Please see the list below for complete details.

- **Microsoft Windows 8.1 Update or newer**
- **Microsoft .NET Framework 4.5.2 or newer**
- **LD Series Firmware Update Utility**
 - Please visit the [LD Series product page](#) to download the latest version.
- **LD Series Firmware**
 - Please visit the [LD Series product page](#) to download the latest version and find information about the current and previous releases.

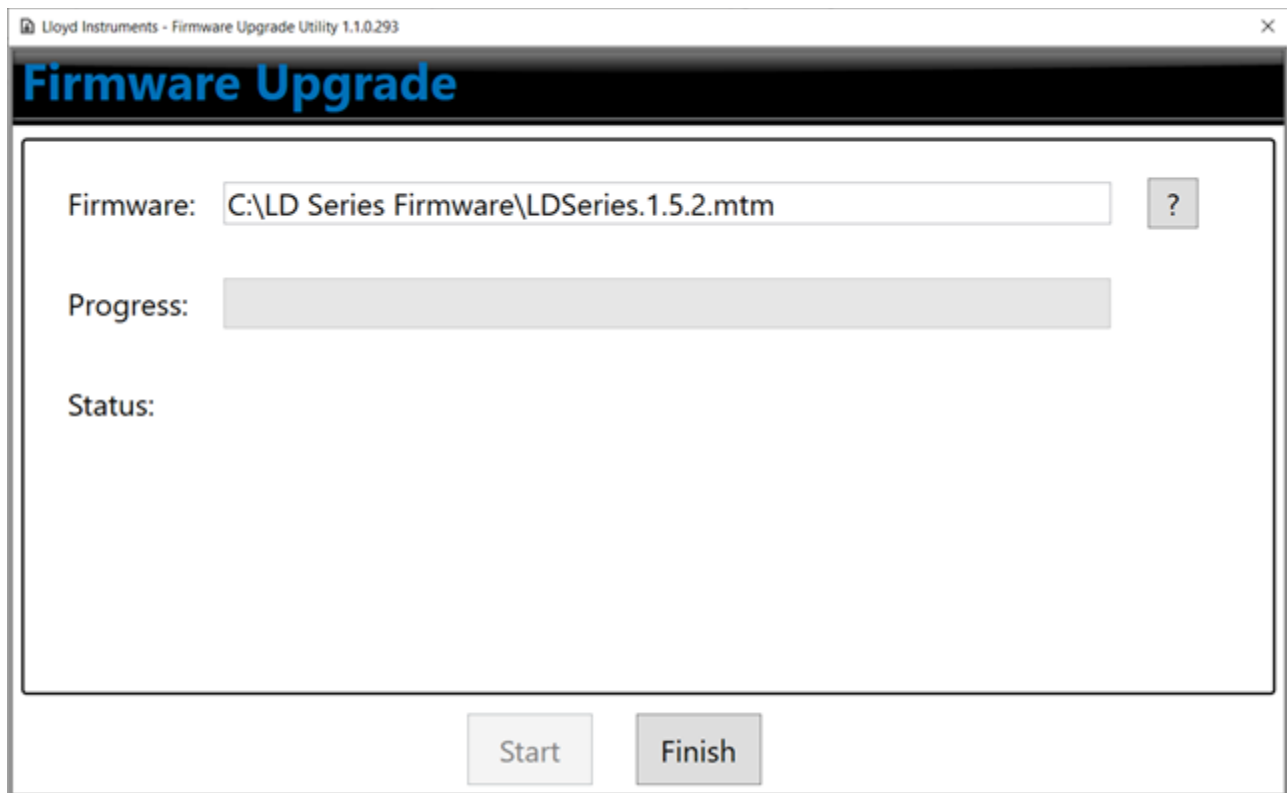
Notes

- These instructions apply to all models of the LD Series, LD5, LD10, LD30, LD50, and LD100. The firmware is the same across the range.
- Distributors or AMETEK STC Sales team members can use Service Utility to upgrade LD Series firmware.

Upgrade LD Series Firmware

If NexygenPlus is installed on the computer used to upgrade the firmware, please verify that NexygenPlus is closed.

1. Connect the **LD Series** to the computer where the Firmware Upgrade Utility and LD Series firmware are available.
2. Open the **Firmware Upgrade Utility** application
 - a. Firmware Upgrade Utility is distributed as a zip archive. If you haven't previously, please unzip the utility to a known location.
 - b. The name of executable is ServiceUtility.exe
3. Press the **? button** to browse to the LD Series Firmware
 - a. The LD Series firmware file has an .mtm extension.
4. Press the **Start** button



After pressing the Start button, the upgrade will begin and take approximately 10 minutes.

5. Press the **Finish** button to close the Firmware Upgrade Utility application
6. Turn the **LD Series** off then back on

There will be a “System Upgrade is Required” message on the LD Series handheld.

7. Press the **OK** button to start the system upgrade

The System Upgrade process will take approximately 10 minutes. Once finished, the Safeline message will appear on the handheld.

8. Turn the **LD Series** off then back on

The LD Series is ready to use.

Support

For help and questions about upgrading the LD Series firmware, please contact your distributor or AMETEK STC sales representative. Contact details are available at <https://www.ametektest.com/contactus/contactametektci>.