

**User Manual**  
**DF2 Wedge Software**  
**Version 1.0**

*Part Number: NC003215*  
*Issue: September 2012*



## **WARRANTY**

AMETEK warrants for a period of ninety (90) days from the date of delivery to the Licensee that the Licensed Materials will conform to Chatillon's published specifications and release current at the time of delivery. AMETEK's sole obligation, and the Licensee's sole remedy, shall be for AMETEK to exert its reasonable efforts to correct such alleged defects and to supply the Licensee with a changed version within a reasonable time after Licensee notifies AMETEK in writing of any alleged defect. This warranty does not cover modifications to the Licensed Material made by any person not employed by AMETEK, or any defects caused by or otherwise related to such modifications. Except for the express warranty stated above, AMETEK grant no warranties, either express or implied, on any Licensed material including, but not limited to, all warranties of merchantability and fitness for a particular purpose. Licensee shall bear the risk of loss or damage to the Licensed Material whilst under its control.

## **LICENSE AGREEMENT**

This Software Licence Agreement ("Agreement") is made and entered in to by and between AMETEK and the Customer, hereinafter referred to as the "Licensee". AMETEK hereby grants and the Licensee hereby accepts a non-exclusive, non-transferable Licence to use the Licensed Material, subject to the following terms and conditions.

## **DEFINITIONS**

"Licensed Material" is each product furnished by AMETEK to the Licensee and includes supporting materials and any related updated product or product portion furnished by AMETEK. "User System" is a single CPU.

## **LICENSE**

The License granted hereunder authorizes the Licensee, on a non-exclusive basis, to use the Licensed Material for use on computers which are interfaced with instruments manufactured or sold by AMETEK. The use by the Licensee of Licensed Material supplied by AMETEK shall be deemed to be an acceptance of the terms of this License Agreement by both parties.

## **REPRODUCTION RIGHTS**

Licensee may make one copy of the Licensed Materials for archival (backup) purposes. Licensee may copy the Licensed Material on to a hard disk which is the integral hardware component of the single computer on which the Licensed Material is to be used. In this case, the original delivery media becomes the backup copy and the working copy is that which resides on the hard disk.

Licensee agrees not to remove AMETEK copyright notices and other legends both in and on every copy of the Licensed Material, in any form, including partial copies.

Licensee must not modify the Licensed Material or incorporate it into any other software without the express written permission of AMETEK.

## **SECURITY AND TRANSFERABILITY**

The Licensee agrees not to provide, sub License, use in a time-sharing service or otherwise make available the Licensed Material or any portion thereof, in any form, to any person other than the Licensee or AMETEK employees without the prior written consent of AMETEK.

The Licensee agrees to take all reasonable steps, both during and after the terms of this License Agreement, to ensure that no unauthorized person shall have access to the Licensed Material, and that no unauthorized copy, in whole or in part, shall be made.

## **TITLE**

Nothing contained in this License Agreement shall directly or indirectly, by implication or otherwise, be construed as an assignment or grant to the Licensee of any right, title or interest in the copyrights, patents or trade secrets of AMETEK, all rights related thereto being reserved by AMETEK except for the non-exclusive License granted hereunder to the Licensee as expressly provided herein.

## **LIABILITY**

AMETEK will not be responsible for any direct, incidental or consequential damages, including, but not limited to Loss of Profits or in any way for any liability arising out of this Agreement, resulting from the use of the Licensed Materials save that nothing in this Agreement affects AMETEK's liability for death or personal injury arising out of AMETEK's negligence.

## **TERMS AND TERMINATION**

The terms of this Agreement and any License granted hereunder shall begin on the date of supply by AMETEK of the Licensed Material, and shall run until the Licensee discontinues use of all Licensed Materials, so long and only during such period, as the Licensee complies with the terms and conditions set forth herein. This Agreement and any License granted hereunder may be terminated by AMETEK, in addition to any other remedies that it may have, if Licensee fails to comply with any of the terms and conditions of this Agreement, provided written notice describing the default is given to the Licensee. The Licensee shall have a period of thirty (30) days from receipt of such notice to certify in writing that it has remedied the default. If AMETEK does not receive such certification within this thirty (30) day period, AMETEK may give the Licensee notification of termination. Within ten (10) days of notification of such termination or within thirty (30) days after the Licensee has discontinued use of all Licensed Material, Licensee shall destroy or return to AMETEK all the License Material and all reproductions in whole or in part in Licensee's possession or under Licensee's control and shall so certify in writing to AMETEK.

## **GENERAL**

Any variation of this Agreement shall be in writing and signed by or on behalf of the parties.

Each party acknowledges that in entering into this Agreement it does not rely on any representation warranty or other provision except as expressly provided herein.

No delay or omission of either party in exercising any right hereunder shall impair such right or is to be construed as a waiver thereof.

# Contents

---

<b>PREFACE</b> .....	<b>5</b>
<b>1 INTRODUCTION</b> .....	<b>6</b>
1.1 WHAT'S NEW.....	6
1.2 SYSTEM REQUIREMENTS.....	6
1.3 GETTING STARTED .....	6
<b>2 WEDGE MENU</b> .....	<b>8</b>
2.1 FILE MENU .....	8
2.2 LANGUAGE .....	9
2.3 OPTION.....	9
2.4 CONNECT.....	9
2.5 HELP.....	10
2.6 EXIT.....	11
<b>3 SETTINGS</b> .....	<b>12</b>
3.1 DATA SETUP .....	12
3.2 COMMUNICATION SETUP .....	13
<b>4 COMMAND PANEL</b> .....	<b>14</b>
<b>5 CONTACT INFORMATION</b> .....	<b>15</b>

# **PREFACE**

---

## **Purpose of This Document**

This user manual aims to familiarize you with some of the tasks and processes of the DF2 Wedge application. The document does not cover all the basic information and details of the application.

## **Intended Audience**

This document is intended for users of the DF2 Wedge application who are familiar with the basic tasks and terminology of the application. It will enable you to understand the details of some of the tasks that can be performed using DF2 Wedge.

## **Definitions, Acronyms and Abbreviations**

<b>Abbreviation</b>	<b>Description</b>
DF2	Chatillon Digital Force Gauge
USB	Universal Serial Bus

# 1 Introduction

---

The DF2 WEDGE communication software supports serial data communications between your Chatillon DF2 Series force gauge and your Microsoft Windows based personal computer. Measurement data is sent from your Device over an RS-232/USB/Bluetooth serial connection to a Microsoft Excel file on your personal computer. The data can then be edited, saved on your computer, and printed.

## 1.1 What's New

DF2 WEDGE is easier to use and better than ever. Some of the features that are new to DF2 Wedge are:

- Automatic Communication Setup
- Automatic Identification of Force Gauge
- Supports Bluetooth communication

This user manual covers some of the tasks that can be performed using DF2 Wedge

## 1.2 System Requirements

- Operating System: Win XP (with SP 3) and Windows 7
- Framework: MS.Net Framework 4.0
- Processor: Pentium and Higher
- Serial Port : 1 Serial/USB port
- Bluetooth Connectivity if required

## 1.3 Getting Started

The DF2 Wedge window includes standard Windows components. Of particular interest:

- The Title Bar displays just the DF2 Wedge product title.
- The Toolbar provides quick ways of performing the most common tasks.
- The Main Window Area displays information attached device, measurement data received from the gauge, and any error message.

- The Settings expander to do Data and Communication setup before connecting to the force gauge.
- Finally, the Status Line displays the Output file name and Connection type selected.

A sample DF2 Wedge window is shown below.



**Figure 1: DF2 Wedge Window**

## 2 Wedge Menu

---

The Wedge menu provides the quick ways of performing the most common tasks in the application.

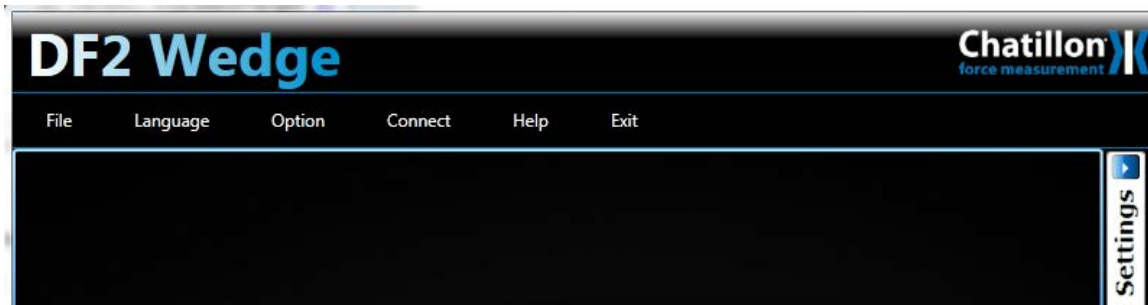


Figure 2: DF2 Wedge Menu

### 2.1 File Menu

It provides basic operation of creating or printing related to output window or file.

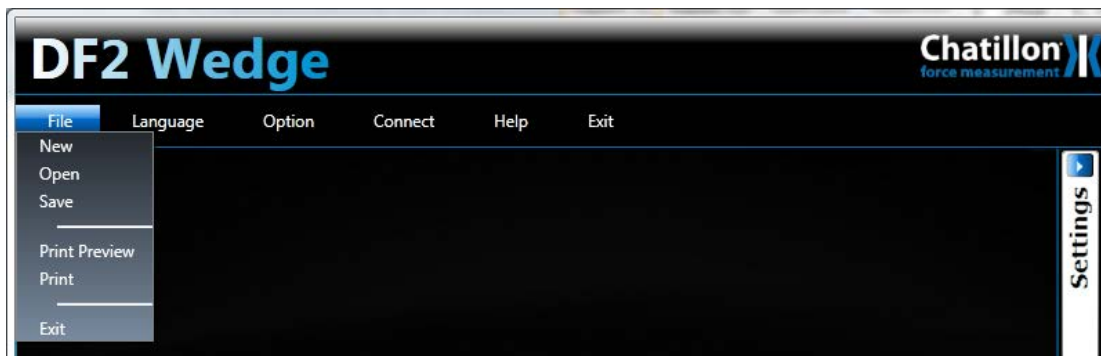


Figure 3: File Menu

1. **New** – Creates and opens a new Excel output file.
2. **Open** – Opens an existing output file.
3. **Save** – Saves the current output file
4. **Print Preview** – Preview the data on output window for printing.
5. **Print** – Launch the print option of current data on output window.



## 2.2 Language

It will list the available language DF2Wedge application can run in. User can change the language at runtime by selecting new language from the menu.

User can also add new language by adding language files in the language folder located where application exist.

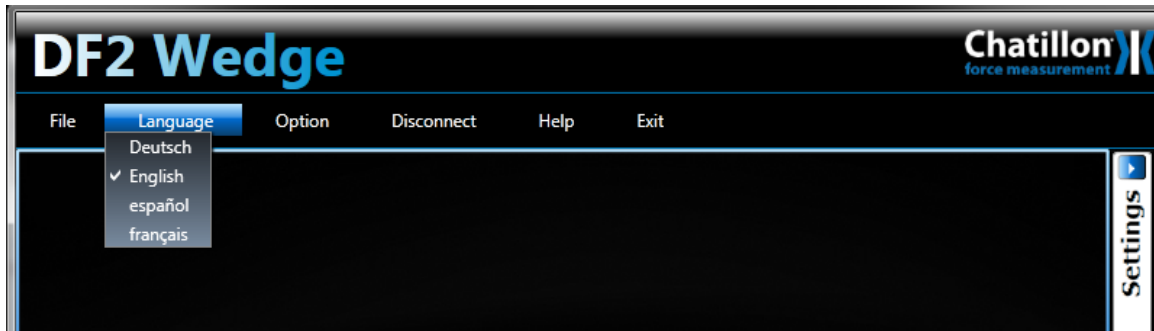


Figure 4: Language Menu

## 2.3 Option

It provides option to save application settings to a xml file through export settings. The saved setting can be loaded in application through import settings.

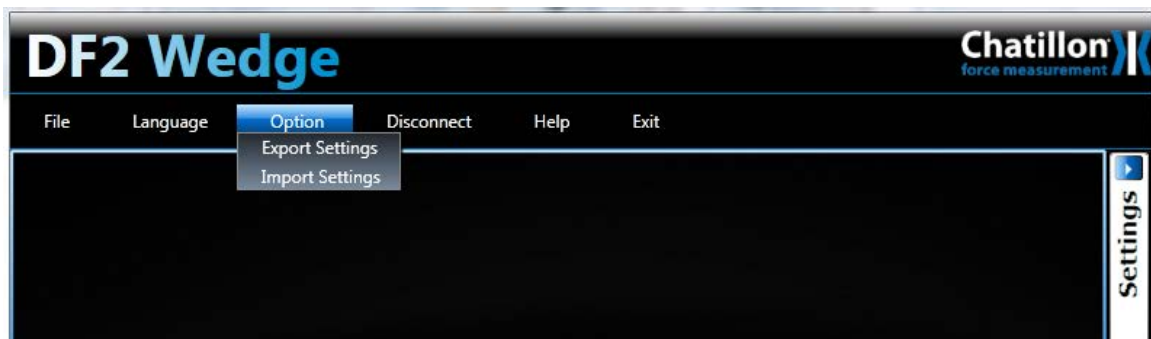


Figure 5: Option Menu

## 2.4 Connect

This toggle button enable user to connect or disconnect the gauge. Clicking the Connect automatically connects to the attached Chatillon DF2 force gauge with the set configuration. On successful connection the status of attached device is shown on output window and user is prompted for confirmation to open the output file.

### **Sending data from your Chatillon DF Gauge**

When connected to a Chatillon DF Gauge, select the XMIT function key on the DF gauge to send Results or Saved data from the device to your output window and file.

### **Disconnecting your Chatillon device**

Click the Disconnect button to terminate communications between your Chatillon device and the DF2Wedge application.



**Figure 6: Output Window**

## **2.5 Help**

1. User Guide - It provides access to DF2 Wedge application user manual.
2. About – It provide the version detail of the application.

## **2.6 Exit**

If user wants to exit the application user can click this to close application. The last settings will be remembered by application in next launch.

## 3 Settings

---

The settings tab can be expanded by clicking the Settings bar on the right side DF2 Application window. Following area will be visible to do Data and communication setup before connecting to gauge

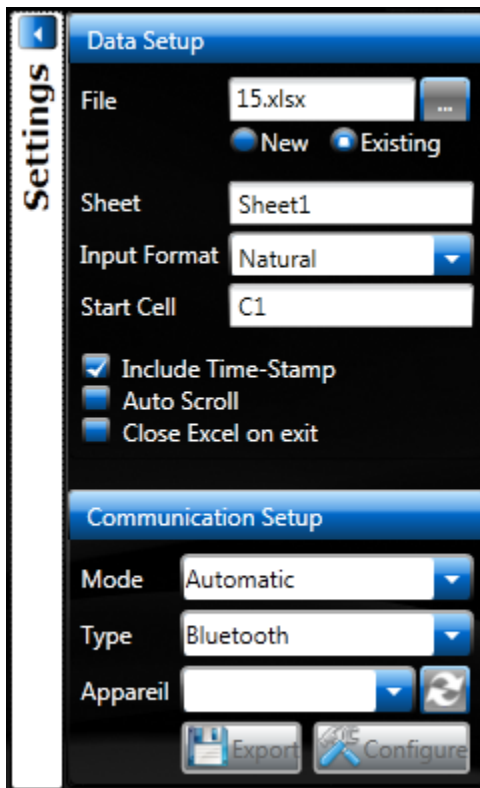


Figure 7: DF2 Wedge Settings tab

### 3.1 Data Setup

User can select and set output file parameter under this setup

1. **File** – To provide option to create new or use existing output Excel file.
2. **Sheet** – To provide name to the worksheet in output file.
3. **Input Format** – The application uses Natural input format

4. **Start Cell** – The starting cell in the excel worksheet from where the measurement data will begin.
5. **Include Timestamp** – It provide option to record time stamp with each measurement received from gauge.
6. **Auto Scroll** – Provide auto scroll in output file with each measurement received from gauge
7. **Close Excel on exit** – To provide option to have output file close when program exit.

## 3.2 Communication Setup

User can set the communication type and connection mode before connecting to the gauge

1. **Mode** – Automatic or Manual selection of gauge.
2. **Type** – To set RS232/USB/Bluetooth communication type.
3. **Port/Device** – Gives list of available ports during RS232/USB or Device during Bluetooth connection for selecting.
4. **Configure Button** – To configure the port settings. On click following dialog will appear to user to enter manually Baud rate, Stop Bits, Parity setting to match your Chatillon device communication port.

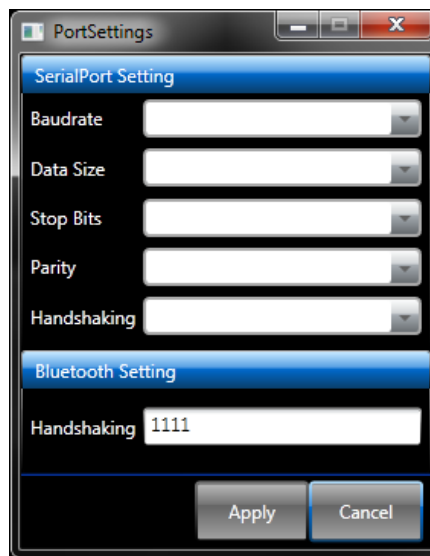
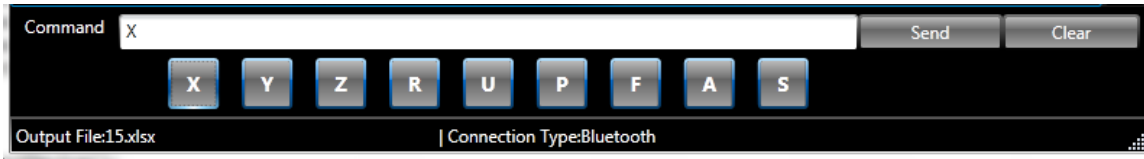


Figure 7: Port Settings tab

5. **Export Button** – Gives an option to export all the application settings to an xml file. On click user will be prompted to enter file name to save configuration.

## 4 Command Panel

The user can use command panel to send command to attached Chatillon device and receive the measurement result on the output window and file. The panel holds the supported command button that can be sent to device



The commands

COMMAND	FUNCTION
Z	Zero the gauge in its current mode.
R	Reset the gauge (i.e. Zeroes all modes, Normal, T-PK and C-PK).
X	Requests data on the gauge display to be transmitted
U	Change Units
P	Steps through modes Normal, T-PK, C-PK
F	Toggles between data collect mode and normal or peak modes
A	The gauge will send its operating units to the external device
S	The gauge will send its current operating mode/status to the external device.
Y	Starts and stops sending continuous instantaneous data to Excel in Data Collect Mode

## 5 Contact Information

---

### **AMETEK/Chatillon Force Measurement**

8600 Somerset Drive  
Largo, Florida, 33773  
T: 727-536-7831  
T: 800-527-9999 (USA only)  
F: 727-539-6882  
Web: [www.chatillon.com](http://www.chatillon.com)  
Email: chatillon.fl-lar@ametek.com

**AMETEK Test & Calibration Instruments**  
A business unit of AMETEK Measurement & Calibration Technologies Division offering the following industry leading brands for test and calibration instrumentation.

**Chatillon Force Measurement**  
The hand held force gauges and motorized testers have earned their reputation for quality, reliability and accuracy and they represent the de facto standard for force measurement.

**Newage Testing Instruments**  
Hardness testers, durometers, optical systems and software for data acquisition and analysis.

**Lloyd Instruments**  
Materials testing machines and software from Lloyd Instruments guarantees expert materials testing solutions. The comprehensive program also covers Texture Analysers to perform rapid, general food testing and detailed texture analysis on a diverse range of foods and cosmetics.

**Davenport Polymer Test Equipment**  
Allows measurement and characterization of moisture-sensitive PET polymers and polymer density.

**JOFRA Calibration Instruments**  
*Temperature Calibrators*  
Portable dry-block calibrators, precision thermometers and liquid baths. Temperature ranges from -90°C(-130°F) to 1205°C(2200°F). Temperature sensors for industrial and marine use.

*Pressure Calibrators*  
Convenient electronic systems ranging from -25 mbar to 1000 bar - fully temperature-compensated for problem-free and accurate field use.

*Signal Instruments*  
Process signal measurement and simulation for easy control loop calibration and measurement tasks.

**M&G Pressure Testers & Pumps**  
Pneumatic floating-ball or hydraulic piston dead weight testers with accuracies to 0.015% of reading. Pressure generators delivering up to 1,000 bar.



[www.chatillon.com](http://www.chatillon.com)

**UK**  
Lloyd Instruments Ltd  
Tel +44 (0)1243 833 370  
uk-far.general@ametek.co.uk

**France**  
AMETEK S.A.S.  
Tel +33 (0)1 30 68 89 40  
general.lloyd-instruments@ametek.fr

**Germany**  
AMETEK GmbH  
Tel +49 (0)2159 9136 510  
info.mct-de@ametek.de

**Denmark**  
AMETEK Denmark A/S  
Tel +45 4816 8000  
ametekdk@ametek.com

**USA**  
AMETEK Measurement & Calibration Technologies  
Tel +1 (727) 536 7831  
chatillon.fl-lar@ametek.com

**India**  
AMETEK Instruments India Pvt Ltd.  
Tel +91 22 2836 4750  
ametekdk@ametek.com

**Singapore**  
AMETEK Singapore Pte Ltd  
Tel +65 6484 2388  
ametekdk@ametek.com

**China**  
AMETEK Inc. - Shanghai  
Tel +86 21 5868 5111  
AMETEK Inc. - Beijing  
Tel +86 10 8526 2111

AMETEK Inc. - Guangzhou  
Tel +86 20 8363 4768  
lloyd@ametek.com.cn